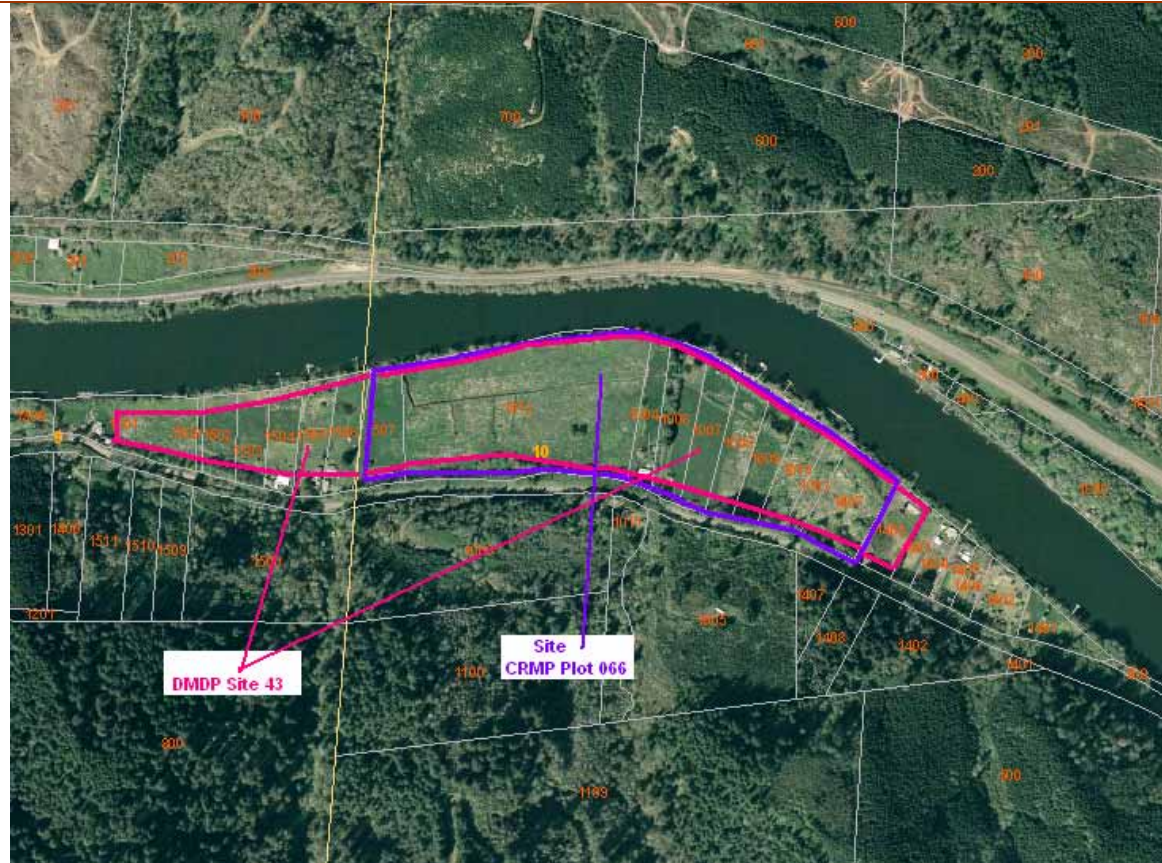


Dredged Material Disposal Plan (DMDP) Site No. 43

RCP/ CRMP Plot No. 66 TRS Map: 18-10-10 Tax Lot(s): 1012 River Segment: 4
Location: Immediately east of Russell's Marina; south bank
Base Zone: Exclusive Farm Use E25
CRMP Combining Zone: Residential Development (/RD) (M.U. 24)

2004 aerial with site boundaries



“Large flat area, previously a part of the seasonal floodway, now bermed along the riverfront. Seasonally wet.” (DMDP 1978)

“No federal project needs would apply to this site, as it lies too far upstream of the end of channel maintenance. However, maintenance needs of the U.S. Plywood facilities may reach this site, depending on equipment used. The entire facilities would probably not be needed. Working the dredged materials into the soil would be easy, as the material could be spread out to a thin layer.” (DMDP 1978)

Site size: 3,800 feet x 500 feet.

Site capacity: 420,000 cubic yards at 6 feet depth.



Vicinity of DMDP Site 43 - Coastal Resource Management Plan zoning designations.

- Flood Hazard Areas: Light Blue = Floodplain; Darker Blue = Floodway. (Above)