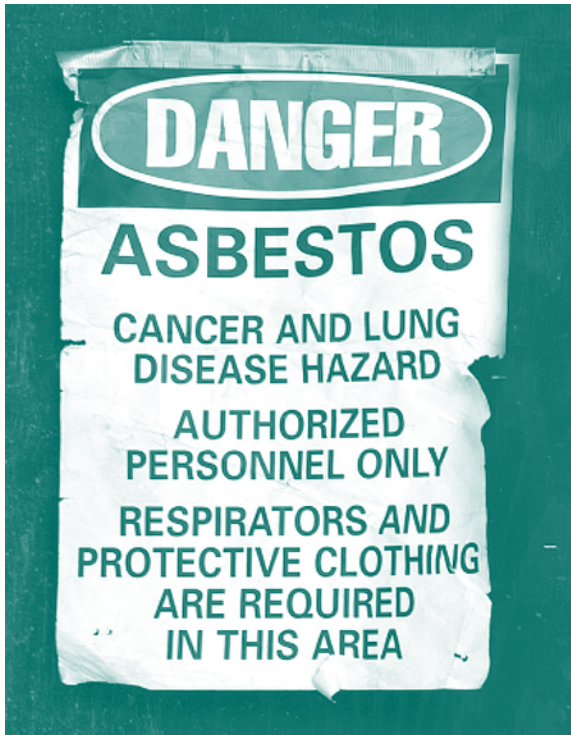


## Special Waste

Some forms of waste are so toxic or dangerous that they require extraordinary handling and disposal. Asbestos and sharps material are among the most common, and the most dangerous.

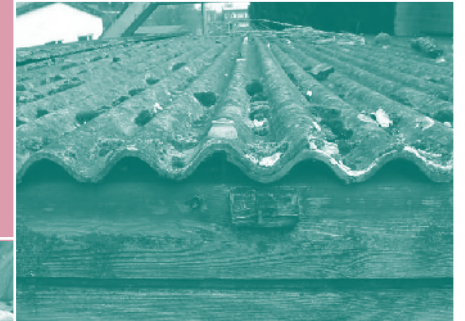
Both these materials require special handling in order to be disposed of safely. In most cases special equipment is required to remove or transport these materials.

Contact Lane County Waste Management at 541-682-3111 any time you have questions about special waste disposal.



Lane County Public Works  
Waste Management Division  
3100 East 17th Avenue  
Eugene, OR 97403

## Recycler's Guide to Asbestos & Sharps Disposal



*Protecting  
human health  
and the environment*



**Lane County Public Works  
Waste Management Division**

# Asbestos & Sharps Disposal



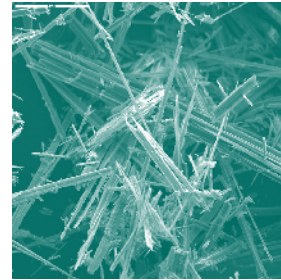
## Asbestos Disposal

Asbestos is a naturally occurring fibrous form of mineral silicate.

This material was used in building products because it is fire-retardant, making it ideal for application as insulation. Many building materials manufactured before 1987 contain asbestos, including vinyl flooring; cement asbestos board used as siding and roofing; pipe and boiler insulation; ceiling texture coats such as, popcorn ceiling and acoustical tiles; and about 3000 other construction materials.

Diseases associated with asbestos inhalation include lung cancer, asbestosis, and mesothelioma, a deadly cancer of the lining of the lungs. Minimize exposure by following specified handling procedures and by wearing approved respirators and protective clothing. No one who is unfamiliar with these procedures should attempt to remove or otherwise disturb asbestos-containing materials.

By federal law, material that contains more than 1% asbestos is considered asbestos-containing material (ACM) and must be handled and disposed of properly. In Lane County, the Lane Regional Air Protection Agency (LRAPA) regulates construction, demolition and remodeling projects that impact ACM, as well as disposal of asbestos wastes. Any person intending to demolish or renovate any structure or vessel containing friable asbestos must notify the authority ten days in advance and comply with detailed requirements covering the project. Residential owner-occupants are exempted from many regulations. For more information about LRAPA's requirements, call 541-736-1056.



LCWMD accepts both friable and non-friable asbestos for disposal at Short Mountain Landfill. **Special packaging procedures and a disposal appointment are required.**

For more information about asbestos disposal procedures, call 541-682-3111.

## Sharps Disposal

Sharps are medical needles, scalpels, and other small sharp instruments. Lane County accepts sharps from households and businesses.

Those of us who make our living handling other people's garbage are concerned with sharps. Used needles turn up where we

work... at the landfill, the recycling center, in garbage trucks, and at our disposal sites. Sharps can be extremely hazardous to human health.

Sharps come from diabetics, livestock and pet owners, and others who must give injections at home. If you generate sharps at home, contact your garbage hauler to find out about the sharps collection service they provide, or use the free household sharps disposal services offered by LCWMD.

Lane County accepts household sharps at all waste disposal and recycling sites for FREE. Business sharps are only accepted at Short Mountain for a charge. Package sharps in a commercially available sharps box or other red, rigid, sealed container (red liquid laundry detergent bottles work great for sharps.

Pop bottles, coffee cans, or milk jugs ARE NOT APPROPRIATE PACKAGING FOR SHARPS).

