

Construction and Demolition Material Organizations

Reusable Construction Materials

BRING Recycling
4446 Franklin Blvd
Eugene, OR
541-746-3023

Habitat's ReStore
(Habitat for Humanity)
1210 Oak Patch Rd
Eugene, OR
541-686-6258

Yard Debris & Wood Recovery

Rexius Sustainable Solutions
1250 Bailey Hill Rd
Eugene, OR
541-342-1835

Lane Forest Products
2111 Prairie Rd
Eugene, OR
541-345-9085

Glenwood Central Receiving Station
3100 E 17th Ave
Eugene, OR
541-682-4120

Shrink Wrap, Plastic Sheeting, and Cardboard Recycling

International Paper
801 N 42nd Street
Springfield, OR
541-744-4100

Scrap Metal Recycling

Schnitzer Steel
111 Highway 99 N
Eugene, OR
541-686-0515

Pacific Recycling
3300 Cross St.
Eugene, OR
541-461-3443

Recycling Without Sorting

Mixed loads of construction debris can be taken to the following recycling facilities for the same price as garbage, or less.

EcoSort
3425 E 17th Ave
Eugene, OR
541-726-7552

McKenzie Recycling
88604 Oak Hill
Cemetery Rd
Eugene, OR
541-342-4254



Lane County Public Works
Waste Management Division
3100 East 17th Avenue
Eugene, OR 97403

Recycler's Guide to Construction & Demolition Reuse & Recycling

**SAVE
35% OFF
CONSTRUCTION
DEBRIS
DISPOSAL!**



Construction and demolition debris mainly consist of good reusable or recyclable material.



**Lane County Public Works
Waste Management Division**

Construction & Demolition Reuse & Recycling

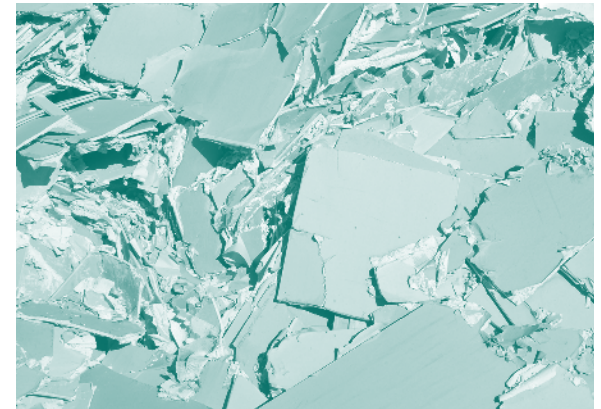
Reuse and Recycling

Construction and demolition materials are heavy and can add up to high costs. At the Glenwood Central Receiving Station you'll spend \$67 per ton for garbage.

Alternatively, reuse, recycle and compost of construction and demolition material (wood, roofing materials, cardboard, plastic sheeting, various metals and possibly yard debris) saves money and supports local business.

Let's look at a fictional scenario where separation of materials occurred for reuse and recycling. **If all 70 tons are disposed of in the landfill, cost would be \$4,690. Save \$1,273 by recycling—that's 35%!**

Separating various materials to recycle at a deconstruction site can reduce your disposal costs and support the local economy. Plan ahead to reuse and recycle by using the Construction and Demolition Material Organizations list on the back. Call each organization before you drop off, to get information about the types of materials that are accepted and business hours.



By Recycling: *(prices are estimates and subject to change)*

		cost to you
• 3 tons of reusable lumber, sinks, doors, windows	\$0 per ton	+\$0
• 20 tons of wood	\$8 per ton	+\$160
• 1 ton of scrap metal	\$50 per ton (revenue)	-\$50
• 1 ton of cardboard	\$40 per ton (revenue)	-\$40
• 2 tons of yard debris	\$8 per ton	+\$16
• 43 tons of garbage	\$67 per ton	+\$2881

27 tons recycled, 43 landfilled **Total cost: \$2,967**

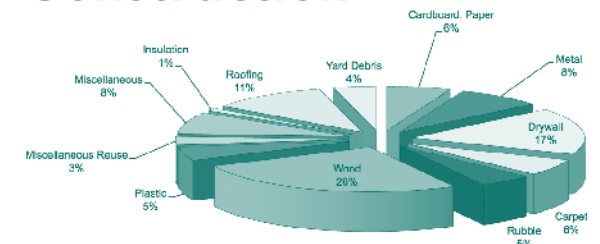
— compared to —

70 tons landfilled **Total cost: -\$4,690**

a savings of: \$1,273

Separated clean fill and rubble has lower cost options too.

Typical Waste From Construction



The information in this chart is from a Marion County waste composition study

It Pays to Reuse and Recycle!